

TC2317_1

Example

Notes:

1. To be used within a short term, left lane closure to inform road users that the off ramp / EXIT is open for use where it may not be clearly visible and the location of the exit point may not be readily apparent.
2. To be used with TC2317_3.
3. Locate on the left in the lane closure immediately prior to the exit diverge point.
4. For example of use see page 4.

Colour Legend

- Retroreflective yellow
- Black



**Queensland
Government**

MULTI-MESSAGE SIGN PLATE "EXIT"

Department of Transport and Main Roads
Infrastructure Management & Delivery Division

APPROVED AS OFFICIAL TRAFFIC SIGN

20/09/19
Date

[Signature]
A/PRINCIPAL ENGINEER
(Traffic Engineering)

TC2317_1

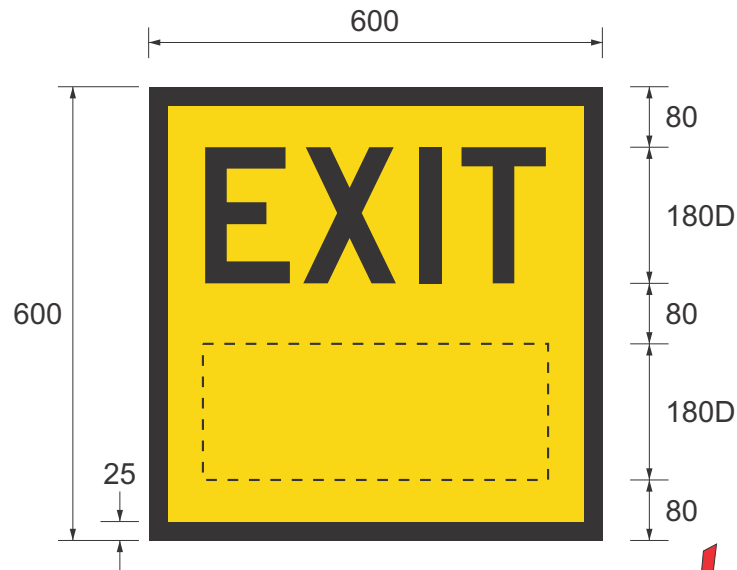
Page 1 of 4

Designed
RH 09/19

Checked
DJ 09/19

Scale
Not to Scale

A ☐ ☐ ☐ ☐ ☐



Example

TC2317_2

TC2317_3

Colour Legend

- Retroreflective yellow
- Black

Notes:

1. To be used within a short term, left lane closure to inform road users that the off ramp / EXIT with an exit number is open for use where it may not be clearly visible and the location of the exit point may not be readily apparent.
2. To be used with TC2317_3.
3. Locate on the left in the lane closure immediately prior to the exit diverge point.
4. Insert appropriate exit number.
5. For example of use see page 4.



**Queensland
Government**

MULTI-MESSAGE SIGN PLATE “EXIT ...”

Department of Transport and Main Roads
Infrastructure Management & Delivery Division

APPROVED AS OFFICIAL TRAFFIC SIGN

20/09/19
Date

[Signature]
A/PRINCIPAL ENGINEER
(Traffic Engineering)

TC2317_2

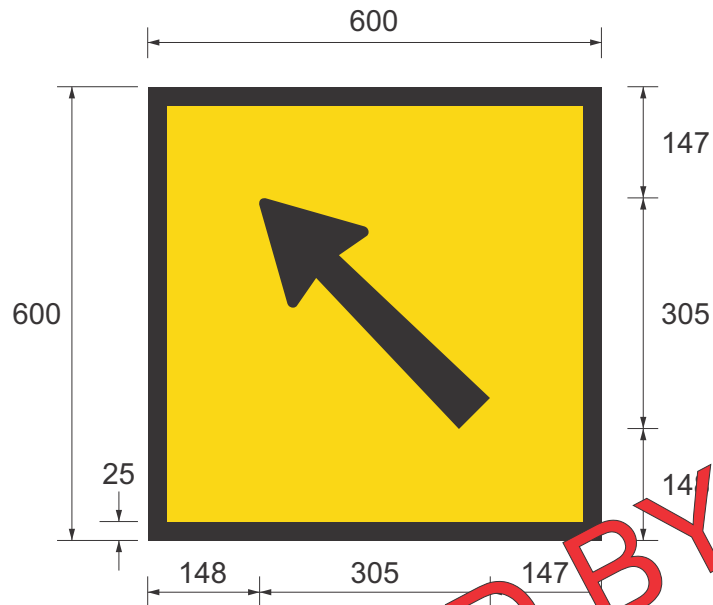
Page 2 of 4

Designed
RH 09/19

Checked
DJ 09/19

Scale
Not to Scale

A				
---	--	--	--	--



SUPERSEDED BY
T1-Q25
(11/21)



TC2317_1



TC2317_2

Examples

Colour Legend

- Retroreflective yellow
- Black

Notes:

1. To be used with either TC2317_1 or TC2317_2.
2. For example of use see page 4.



**Queensland
Government**

MULTI-MESSAGE SIGN PLATE "DIRECTIONAL ARROW"

Department of Transport and Main Roads
Infrastructure Management & Delivery Division

APPROVED AS OFFICIAL TRAFFIC SIGN

20/09/19
Date

[Signature]
A/PRINCIPAL ENGINEER
(Traffic Engineering)

TC2317_3

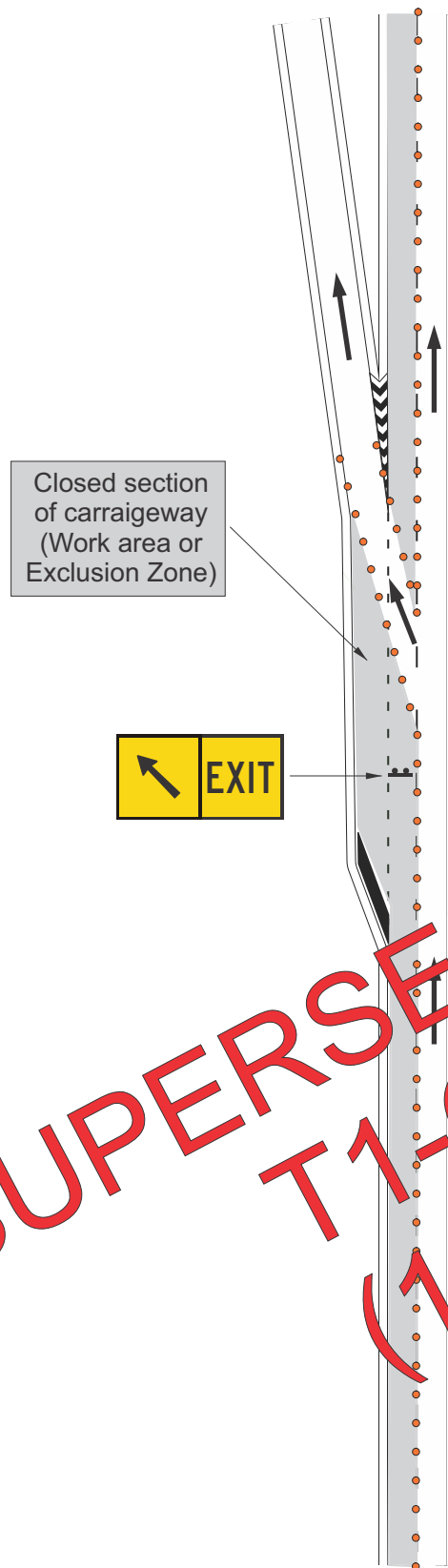
Page 3 of 4

Designed
RH 09/19

Checked
DJ 09/19

Scale
Not to Scale

A ☐ ☐ ☐ ☐ ☐



**SUPERSEDED BY
T1-Q25
(11/21)**

Example - Multilane divided carriageway off ramp



**Queensland
Government**

MULTI-MESSAGE SIGN PLATE "EXAMPLE OF USE"

Department of Transport and Main Roads
Infrastructure Management & Delivery Division

APPROVED AS OFFICIAL TRAFFIC SIGN

20/09/19
Date

TC2317_4

Page 4 of 4

Designed
RH 09/19

Checked
DJ 09/19

Scale
Not to Scale

[Signature]
A/PRINCIPAL ENGINEER
(Traffic Engineering)

A ☐ ☐ ☐ ☐ ☐