

**MAXIMUM
PENALTY
200
PENALTY
UNITS**

TC1803 TC1217



TC1362

* OPTIONAL

**



TC9951_1



T2-Q02

Notes

- * The multi message sign and /or T2-Q02 may be used if there is a requirement to give more advanced warning.
- T2-Q02 may be installed in advance of the road closure to provide advance warning (1 or 2 km as shown) or may be installed some distance in advance of the closure where an alternative route may be taken.
- Regional staff should liaise with Transport Enforcement Officers and Queensland Police Service on sign locations prior to installation.
- ** TC9951 hinged, permanent sign may be used in known flood locations in lieu of T2-Q02 and / or multi message sign to provide advance warning.
- # Examples A or B may be used to close a road and are both enforceable by QPS and Transport Enforcement officers.
- ## D = 60-80 metres.
- Advance signs may be installed at the start of the road section and may be some distance from actual closure point.) They should be installed at decision points, where areas exist to turn around the longest vehicles using that stretch of road or alternative routes are available. As an example refer to TC1802 for details.



**Queensland
Government**

ROAD RESTRICTION SIGN TEMPORARY ROAD CLOSED SIGN TYPICAL LAYOUT

Infrastructure Management & Delivery Division

ORIGINAL APPROVED AS OFFICIAL TRAFFIC SIGN

Designed
TV 02/10

Checked
DJ 02/10

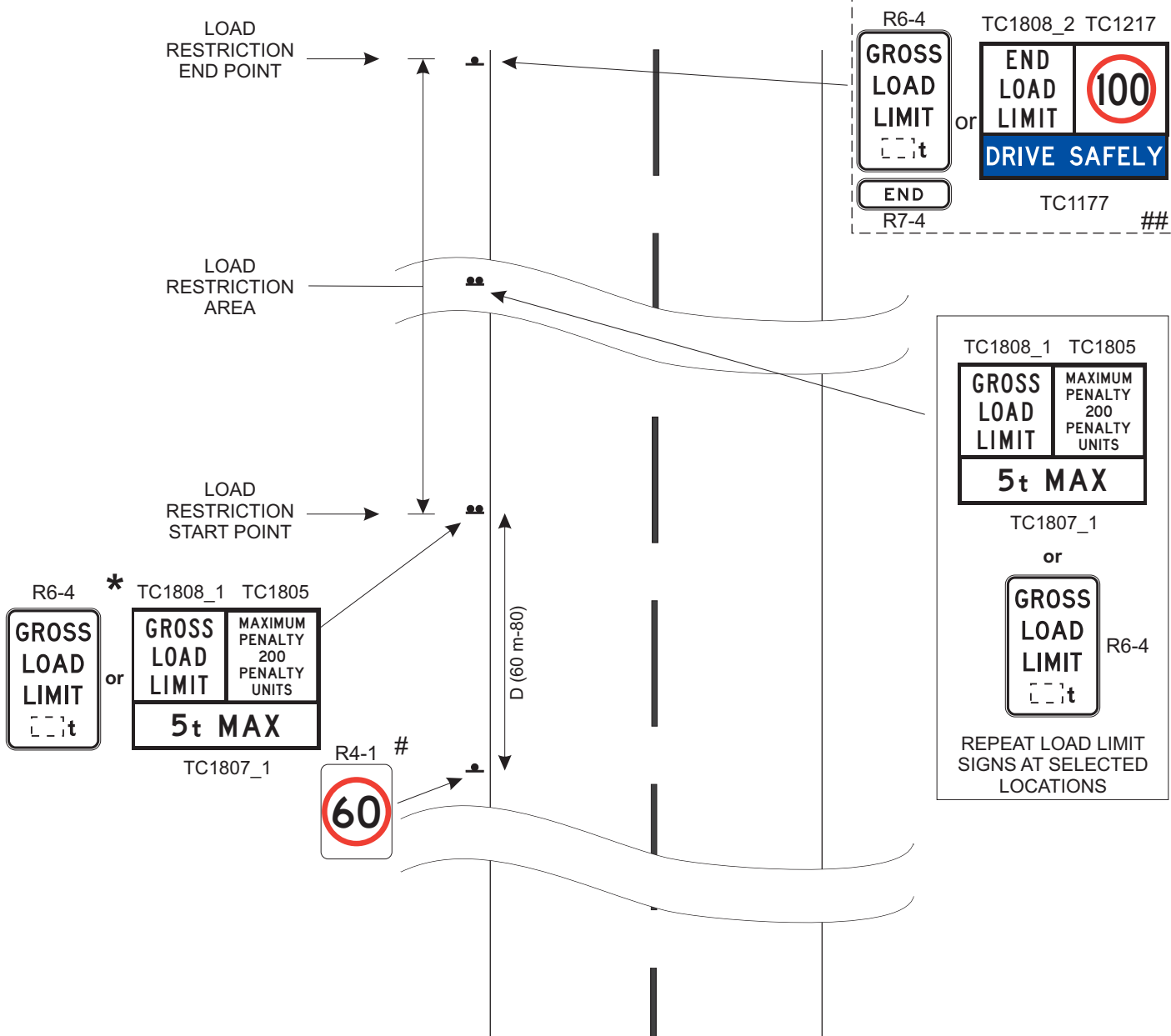
Scale
Not to Scale

ACTING PRINCIPAL ENGINEER
(Traffic Engineering)

19/4/13
Date

TC1806_1
Page 1 of 3

J



Notes

1. Example of a temporary sign arrangement for a 5 ton maximum limit. For other load limits refer TC1807.
2. * Either of these signs shall be located at the actual point road restrictions are to apply.
3. Advance signs may be installed at decision points, where areas exist to turn around the longest vehicles using that stretch of road or alternative routes are available. As an example refer to TC1802.
4. # If the speed limit reduction is required in conjunction with a GROSS LOAD LIMIT sign, install R4-1 in advance of the load limit sign. Repeat R4-1 signs over the length of the reduction as required.
5. ## The load restriction area must be terminated with a GROSS LOAD LIMIT sign (R6-4) showing the appropriate weight, combined with an END sign (R7-4) or the multi message frame as shown.
6. Regional staff should liaise with Transport Enforcement Officers and Queensland Police Service on sign locations prior to installation.
7. Load Limit signs should also be installed on the approach to all intersecting roads.



**Queensland
Government**

ROAD RESTRICTION SIGN TEMPORARY ROAD LOAD LIMITS TYPICAL LAYOUT

Infrastructure Management & Delivery Division

ORIGINAL APPROVED AS OFFICIAL TRAFFIC SIGN

Designed
TV 02/10

Checked
DJ 02/10

Scale
Not to Scale

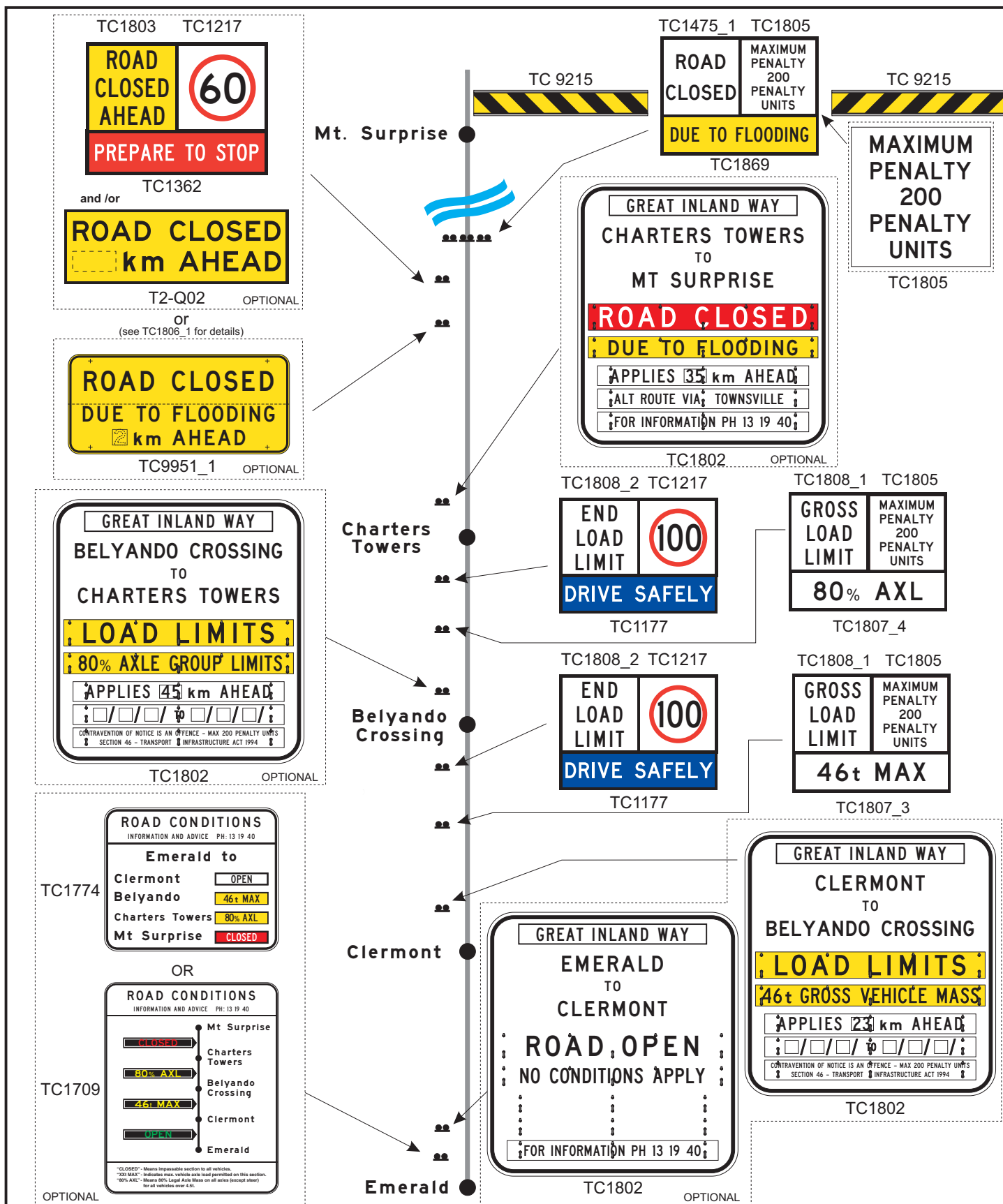
R King
ACTING PRINCIPAL ENGINEER
(Traffic Engineering)

19/4/13
Date

TC1806_2

Page 2 of 3

☒ J ☐ ☐ ☐ ☐



**Queensland
Government**

ROAD RESTRICTION SIGN TYPICAL ROUTE LAYOUT

Infrastructure Management & Delivery Division

ORIGINAL APPROVED AS OFFICIAL TRAFFIC SIGN

Designed
TV 02/10

Checked
DJ 02/10

Scale
Not to Scale

R. King
ACTING PRINCIPAL ENGINEER
(Traffic Engineering)

19/4/13
Date

TC1806_3
Page 3 of 3

J