



### Colour Legend

- Retroreflective yellow
- Black

### Notes

1. This sign may be used to warn of a road closure. It is not enforceable on its own.
2. This sign may be installed in advance of a known section of road subject to flooding that is closed on a regular basis due to that flooding. The road closure point (barrier boards etc.) must be visible from this sign.
3. For more advance warning sign examples see pages 2, 3, 4 and 5.
4. For typical sign layout options, refer to page 7.
5. \* This ROAD CLOSED sign may be supplemented with warning lights. These lights should be activated only when the sign is open. See TC1832\_6 for warning light details.
6. Sign shall be locked closed and optional flashing lights deactivated when no flood warning is required.
7. Cut slots in flap and fit corresponding staples in the sign to padlock the flap in both the raised and lowered positions.
8. Back of sign to be suitably stiffened at staple points.
9. Suitable brass hinge to be utilised.



**Queensland  
Government**

## SPECIAL ADVANCED WARNING "ROAD CLOSED DUE TO FLOODING"

Department of Transport and Main Roads  
Infrastructure Management & Delivery Division

APPROVED AS OFFICIAL TRAFFIC SIGN

Designed  
TV 05/10

Checked  
DJ 11/21

Scale  
Not to Scale

*R. King*  
PRINCIPAL ENGINEER  
(Traffic Engineering)

21/11/21  
Date

TC1832\_1  
Page 1 of 10

E F G H



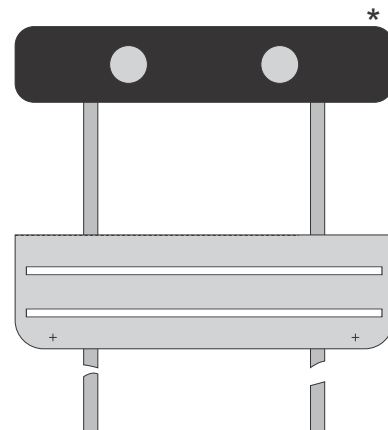


### Colour Legend

- Retroreflective yellow
- Black



**Open**  
(only when required)



**Closed**  
(normal)

### Notes

1. This sign may be used to warn of a road closure ahead. It is not enforceable on its own.
2. This sign may be installed in advance of a known section of road subject to flooding that is closed on a regular basis due to that flooding.
3. For other advance warning sign examples see pages 1, 2, 4 and 5.
4. For typical sign layout options, refer to page 7.
5. \* This ROAD CLOSED AHEAD sign may be supplemented with warning lights. These lights should be activated only when the sign is open. See TC1832\_6 for warning light details.
6. Sign shall be locked closed and optional flashing lights deactivated when no flood warning is required.
7. Cut slots in flap and fit corresponding staples in the sign to padlock the flap in both the raised and lowered positions.
8. Back of sign to be suitably stiffened at staple points.
9. Suitable brass hinge to be utilised.



**Queensland**  
Government

## SPECIAL ADVANCED WARNING “ROAD CLOSED AHEAD DUE TO FLOODING” (two lines)

Infrastructure Management & Delivery Division

APPROVED AS OFFICIAL TRAFFIC SIGN

Designed  
TV 05/11

Checked  
DJ 11/21

Scale  
Not to Scale

*R King*  
PRINCIPAL ENGINEER  
(Traffic Engineering)

21/11/21  
Date

TC1832\_3  
Page 3 of 10

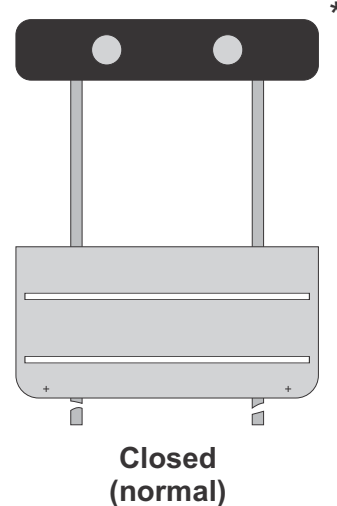
E F G H





### Colour Legend

- Retroreflective yellow
- Black



### Notes

1. This sign may be used to warn of a road closure ahead. It is not enforceable on its own.
2. This sign may be installed in advance of a known section of road subject to flooding that is closed on a regular basis due to that flooding.
3. For other advance warning sign examples see pages 1, 2,3 and 4.
4. For typical sign layout options, refer to page 7.
5. \* The ROAD CLOSED AHEAD sign may be supplemented with warning lights. These lights should be activated only when the sign is open. See TC1832\_6 for warning light details.
6. Sign shall be locked closed and optional flashing lights deactivated when no flood warning is required.
7. Cut slots in flap and fit corresponding staples in the sign to padlock the flap in both the raised and lowered positions.
8. Back of sign to be suitably stiffened at staple points.
9. Suitable brass hinge to be utilised.



**Queensland  
Government**

## SPECIAL ADVANCED WARNING "ROAD CLOSED AHEAD DUE TO FLOODING"

Infrastructure Management & Delivery Division

APPROVED AS OFFICIAL TRAFFIC SIGN

Designed  
TV 10/15

Checked  
DJ 11/21

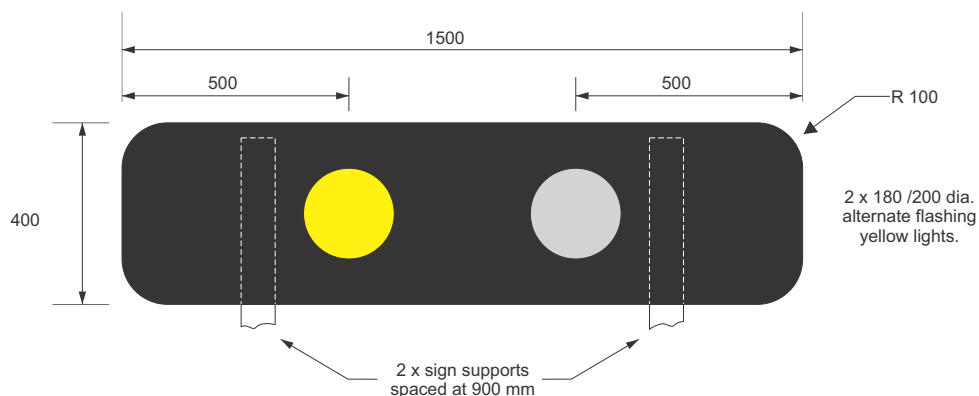
Scale  
Not to Scale

*R. King*  
PRINCIPAL ENGINEER  
(Traffic Engineering)

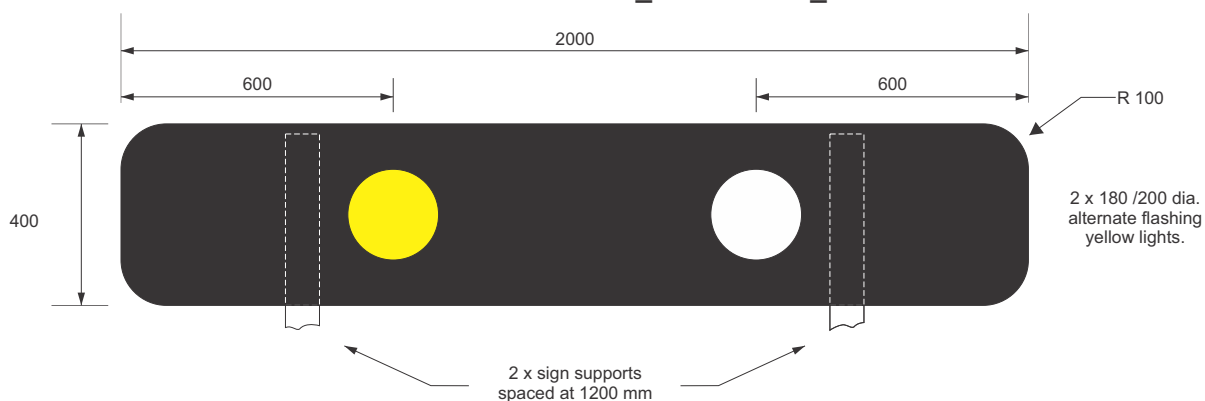
21/11/21  
Date

TC1832\_5  
Page 5 of 10

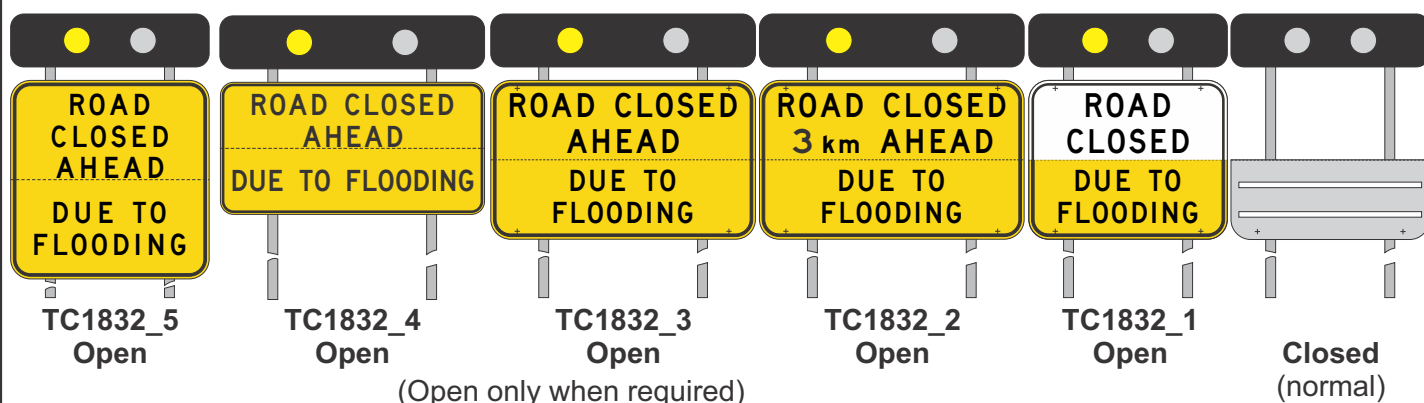
E F G H



**For use with TC1832\_1 & TC1832\_5**

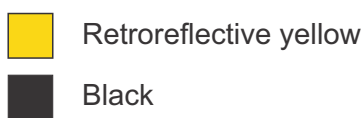


**For use with TC1832\_2 / TC1832\_3 / TC1832\_4**



### EXAMPLES

### Colour Legend



### Notes

1. A narrow or wide warning light panel shall be used in conjunction with special advanced warning signs (TC1832\_1 / TC1832\_5) and (TC1832\_2 / TC1832\_3 / TC1832\_4) respectively. This is to highlight that the road ahead is closed due to flooding. These lights are to flash only when the sign is opened and the message is displayed.
2. The conspicuity devices (flashing lights) shall meet the requirements of AS2144 for 200mm diameter signal lanterns.
3. Stiffener rails used on the light panel should be "Type 1" and spaced so as not to interfere with light assembly.
4. Flashing light separation is designed to suit 2 x 65 NB posts spaced at 900mm and 1200mm (non slip base - 1500 mm to underside of sign).
5. For the narrow and wide spacing, post design examples details see pages 8,9 and 10.



**Queensland  
Government**

## SPECIAL ADVANCED WARNING "FLOOD WARNING LIGHTS"

Infrastructure Management & Delivery Division

APPROVED AS OFFICIAL TRAFFIC SIGN

Designed  
TV 05/11

Checked  
DJ 11/21

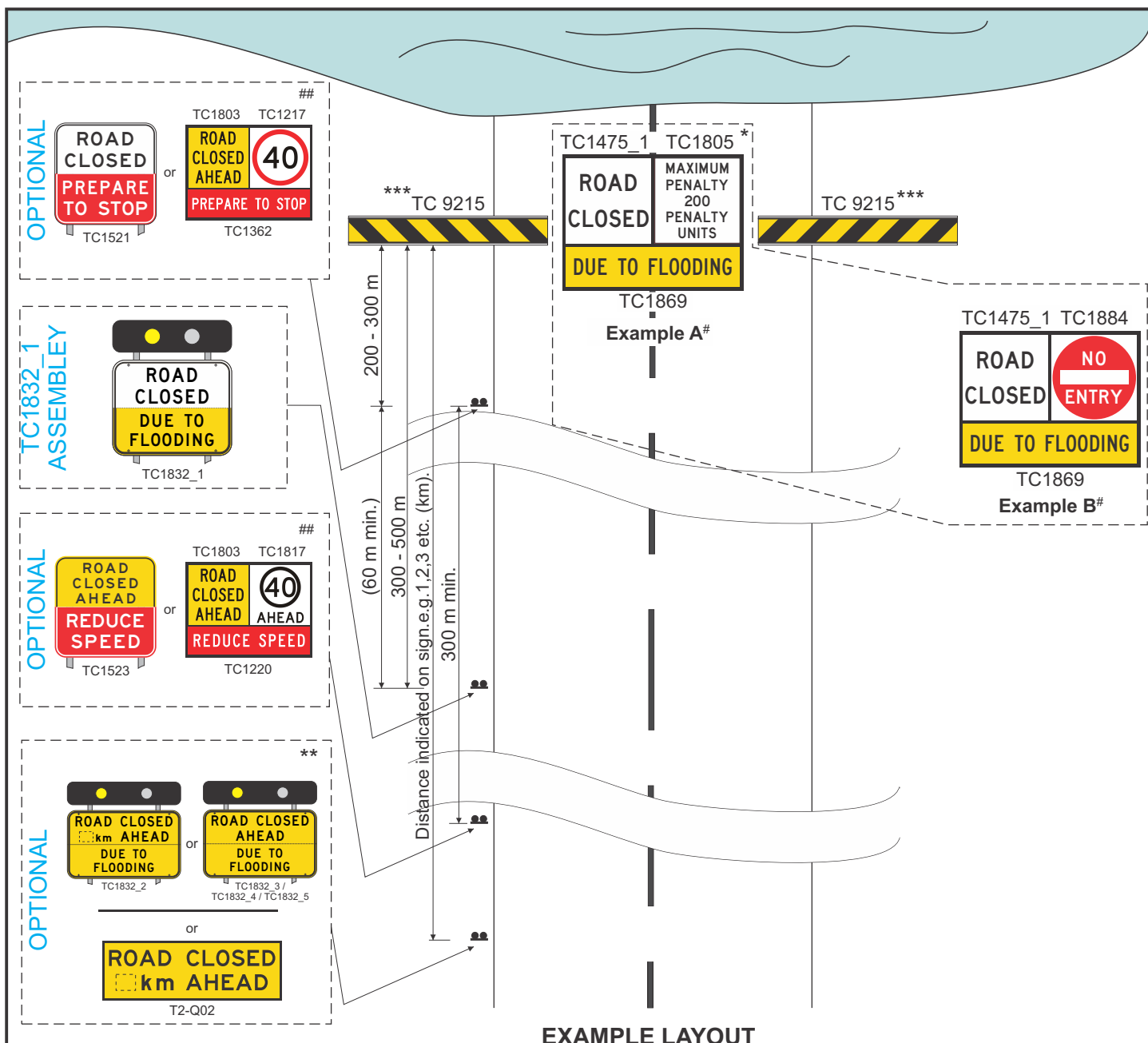
Scale  
Not to Scale

*R King*  
PRINCIPAL ENGINEER  
(Traffic Engineering)

21/11/21  
Date

TC1832\_6  
Page 6 of 10

E F G H



## Notes

1. The permanent ROAD CLOSED DUE TO FLOODING sign (TC1832\_1) should be installed within 500 metres of the area subject to flooding to enable a quick response to the potential hazard. The road closure point must be visible from this sign.
2. \* As soon as is practicable after the sign is opened and the flood warning lights are activated, a ROAD CLOSED multi message combination sign shall be installed where the roadway is closed to traffic. Barrier boards shall be erected across the roadway in conjunction with the sign and the bars should be aligned to point to the sign.
3. # Examples A or B may be used to close a road and are both enforceable by QPS and Transport Enforcement officers.
4. \*\* TC1832\_2, (TC1832\_3 / TC1832\_4 / TC1832\_5) or T2-Q02 may be installed further in advance of the road closure to provide advance warning (distance shown on the sign) or may be installed some distance in advance of the closure where an alternative route may be taken.
5. ## A 40 km/h speed limit may be established prior to the road closure point by installing a multi-message sign combination as shown. If the reduction in speed limit is greater than 20 km/h, an advance sign indicating 40 km/h AHEAD must be installed a minimum of 300 m prior to the 40 km/h zone.
6. \*\*\* A permanent boom gate installation, capable of being fitted with any of the Example A or B sign combinations, may be utilised as an option to the temporary barrier board installation.



**Queensland  
Government**

## SPECIAL ADVANCED WARNING ROAD CLOSED TYPICAL SIGN LAYOUT

Infrastructure Management & Delivery Division

APPROVED AS OFFICIAL TRAFFIC SIGN

Designed  
TV 05/11

Checked  
DJ 11/21

Scale  
Not to Scale

*R. King*  
PRINCIPAL ENGINEER  
(Traffic Engineering)

21/11/21  
Date

TC1832\_7  
Page 7 of 10

E F G H



## Traffic Sign Structures - Design Form

<b>Job :</b> Flood		<b>Section :</b> Road Closed		<b>Sign Pos :</b> 1	
<b>Location Details</b>				<b>Slope Details</b>	
Wind Region		Region C		<u>Segment</u>	
Exposed Terrain		No		<u>Length</u>	
Risk Category		Low Impact Risk		<u>Height</u>	
Foundation Soil		Loose to Medium Dense Sand		1	
Side of Road		Left		5000	
Distance from carriageway		1000		0	
Road Height		1500			
<b>Sign Face Details</b>					
<u>Detail</u>	<u>Front Lower</u>	<u>Front Upper</u>			
Sign Code	1	2			
Sign Width	1500	1500			
Sign Depth	1200	400			
Legend Class	Various	Various			
Legend Colour	Various	Various			
Background Class	Various	Various			
Background Colour	Yellow	Brown			
Sign Separation	0	0			
<b>Sign Stiffener Details</b>					
<u>Detail</u>	<u>Front Lower</u>	<u>Front Upper</u>			
Stiffener Type	1	1			
Number of Stiffeners	3	2			
Stiffener Spacing	500	300			
Number of Brackets	6	4			
<b>CHS Steel Design Details</b>					
<u>Support Details</u>					
Number	2				
Spacing	900, Standard				
Kerb Post Length	4100				
Post 2 Length	4100				
Post 3 Length	0				
Post 4 Length	0				
Stub Length	0				
Post Dimensions	65 NB				
Post Wall Thickness	3.2				
Post Grade	C350				
Slip Base Required	No				
<u>Footing Details</u>					
Diameter of Hole	300				
Depth of Hole	1000				

1. This sign support design may be used for the combined installation of the ROAD CLOSED DUE TO FLOODING sign (TC1832\_1) with the flood warning lights TC1832\_6.



**Queensland  
Government**

## SPECIAL ADVANCED WARNING "SIGN SUPPORT DETAILS-NARROW"

Infrastructure Management & Delivery Division

APPROVED AS OFFICIAL TRAFFIC SIGN

Designed  
TV 10/15

Checked  
DJ 11/21

Scale  
Not to Scale

*R. King*  
PRINCIPAL ENGINEER  
(Traffic Engineering)

21/11/21  
Date

**TC1832\_8**  
Page 8 of 10

E F G H



## Traffic Sign Structures - Design Form

Job : Flood

Section : Road Closed

Sign Pos : 2

### Location Details

Wind Region  
Exposed Terrain  
Risk Category  
Foundation Soil  
Side of Road  
Distance from carriageway  
Road Height

Region C  
No  
Low Impact Risk  
Loose to Medium Dense Sand  
Left  
1000  
1500

### Slope Details

Segment	Length	Height
1	5000	0

### Sign Face Details

Detail	Front Lower	Front Upper
Sign Code	1	2
Sign Width	1500	1500
Sign Depth	1500	400
Legend Class	Various	Various
Legend Colour	Various	Various
Background Class	Various	Various
Background Colour	Yellow	Brown
Sign Separation	0	0

### Sign Stiffener Details

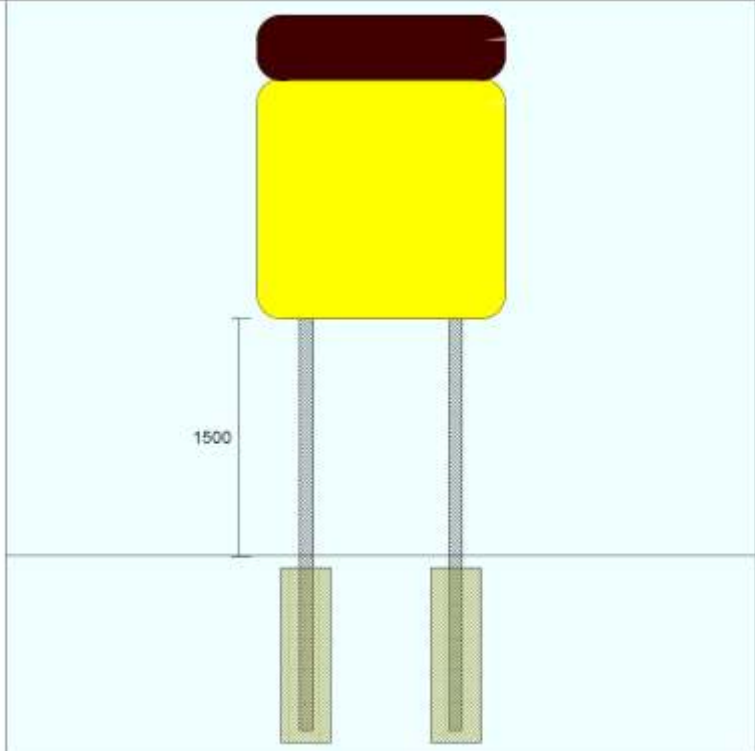
Detail	Front Lower	Front Upper
Stiffener Type	1	1
Number of Stiffeners	4	2
Stiffener Spacing	465	300
Number of Brackets	8	4

### CHS Steel Design Details

Support Details	
Number	2
Spacing	900, Standard
Kerb Post Length	4500
Post 2 Length	4500
Post 3 Length	0
Post 4 Length	0
Stub Length	0
Post Dimensions	80 NB
Post Wall Thickness	3.2
Post Grade	C350
Slip Base Required	No

Footings Details	
Diameter of Hole	300
Depth of Hole	1100



1. This sign support design may be used for the combined installation of the ROAD CLOSED AHEAD DUE TO FLOODING sign (TC1832\_5) with the flood warning lights (TC1832\_6)



**Queensland**  
Government

## SPECIAL ADVANCED WARNING "SIGN SUPPORT DETAILS-NARROW"

Infrastructure Management & Delivery Division

APPROVED AS OFFICIAL TRAFFIC SIGN

Designed  
TV 10/15

Checked  
DJ 11/21

Scale  
Not to Scale

*R. King*  
PRINCIPAL ENGINEER  
(Traffic Engineering)

21/11/21  
Date

TC1832\_9  
Page 9 of 10

E F G H

## Traffic Sign Structures - Design Form

<b>Job : Flood</b>		<b>Section : Road Closed</b>		<b>Sign Pos : 3</b>		
<b>Location Details</b>			<b>Slope Details</b>			
Wind Region	Region C	<u>Segment</u>	<u>Length</u>	<u>Height</u>		
Exposed Terrain	No	1	5000	0		
Risk Category	Low Impact Risk					
Foundation Soil	Loose to Medium Dense Sand					
Side of Road	Left					
Distance from carriageway	1000					
Road Height	1500					
<b>Sign Face Details</b>						
<u>Detail</u>	<u>Front Lower</u>	<u>Front Upper</u>				
Sign Code	1	2				
Sign Width	2000	2000				
Sign Depth	1200	400				
Legend Class	Various	Various				
Legend Colour	Various	Various				
Background Class	Various	Various				
Background Colour	Yellow	Brown				
Sign Separation	0	0				
<b>Sign Stiffener Details</b>						
<u>Detail</u>	<u>Front Lower</u>	<u>Front Upper</u>				
Stiffener Type	1	1				
Number of Stiffeners	3	2				
Stiffener Spacing	500	300				
Number of Brackets	6	4				
<b>CHS Steel Design Details</b>						
<u>Support Details</u>						
Number	2					
Spacing	1200, Standard					
Kerb Post Length	4100					
Post 2 Length	4100					
Post 3 Length	0					
Post 4 Length	0					
Stub Length	0					
Post Dimensions	65 NB					
Post Wall Thickness	3.2					
Post Grade	C350					
Slip Base Required	No					
<u>Footing Details</u>						
Diameter of Hole	300					
Depth of Hole	1000					

1. This level ground sign support design may be used for the combined installation of either ROAD CLOSED "x"km AHEAD DUE TO FLOODING sign (TC1832\_2) or ROAD CLOSED AHEAD DUE TO FLOODING signs (TC1832\_3 or TC1832\_4) with the flood warning lights (TC1832\_6). Note TC1832\_4 supports will be 200mm shorter than TC1832\_3 supports.



**Queensland  
Government**

## SPECIAL ADVANCED WARNING "SIGN SUPPORT DETAILS-WIDE"

Infrastructure Management & Delivery Division

APPROVED AS OFFICIAL TRAFFIC SIGN

Designed  
TV 10/15

Checked  
DJ 11/21

Scale  
Not to Scale

*R. King*  
PRINCIPAL ENGINEER  
(Traffic Engineering)

21/11/21  
Date

**TC1832\_10**

Page 10 of 10

E F G H