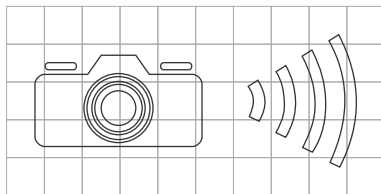




Colour Legend

- Retroreflective blue
- Retroreflective white
- Retroreflective fluorescent red/orange (target board edge strip)



Notes:

1. Install signs only at locations approved by the Queensland Police Service and Department of Transport and Main Roads. Contact the Traffic Camera Office for approval process.
2. Edge strip comprises 30 mm x 30 mm blue and white checker.
3. For sign layout prior to deployment of speed cameras at roadwork sites refer to page 2.



**Queensland
Government**

Department of Transport and Main Roads
Infrastructure Management & Delivery Division

Designed
RH 02/07

Checked
DJ 01/20

Scale
Not to Scale

INFORMATION SIGN "SPEED CAMERAS USED AT ROADWORKS FOR ROAD SAFETY"

APPROVED AS OFFICIAL TRAFFIC SIGN

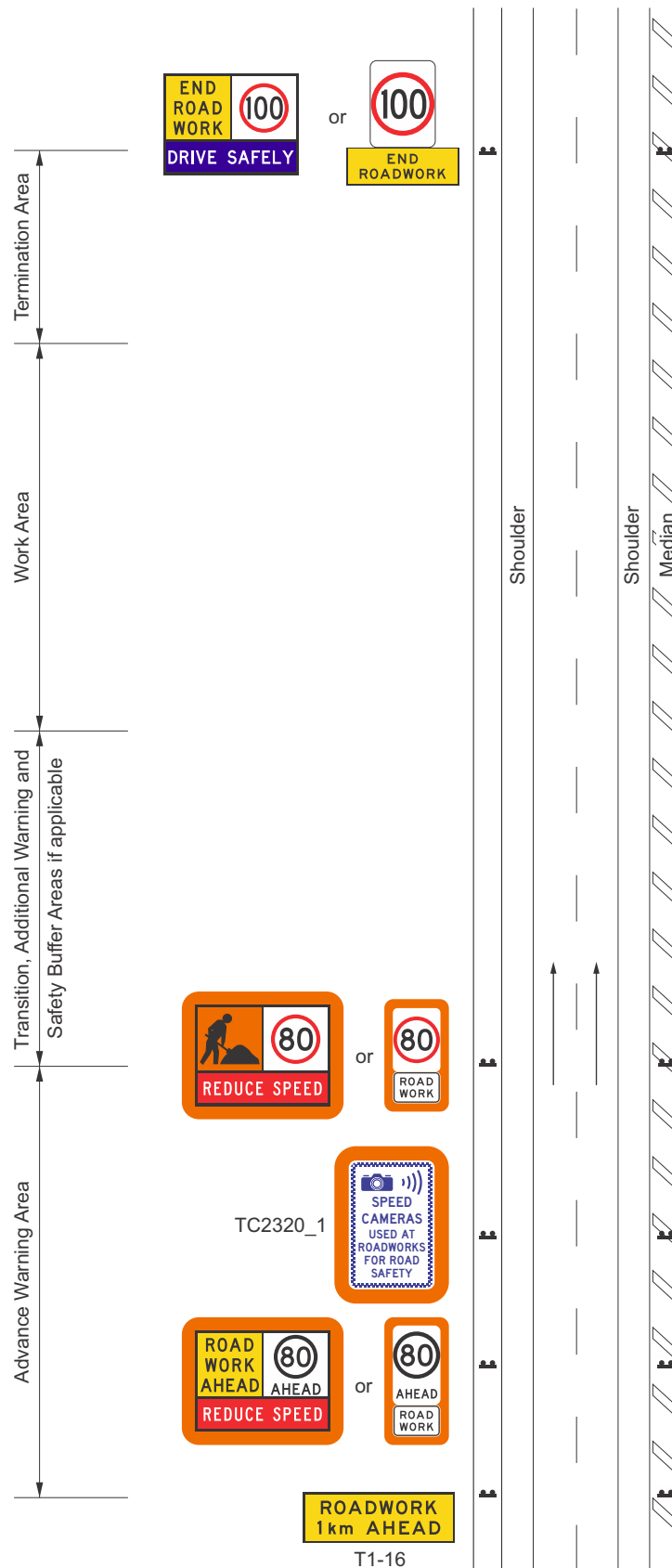
R. King
PRINCIPAL ENGINEER
(Traffic Engineering)

22/07/22
Date

TC2320_1

Page 1 of 3

A B



NOT TO SCALE



**Queensland
Government**

SIGN LAYOUT PRIOR TO DEPLOYMENT OF SPEED CAMERAS AT ROADWORK SITES

Department of Transport and Main Roads
Infrastructure Management & Delivery Division

APPROVED AS OFFICIAL TRAFFIC SIGN

22/07/22
Date

R. King
PRINCIPAL ENGINEER
(Traffic Engineering)

TC2320_2

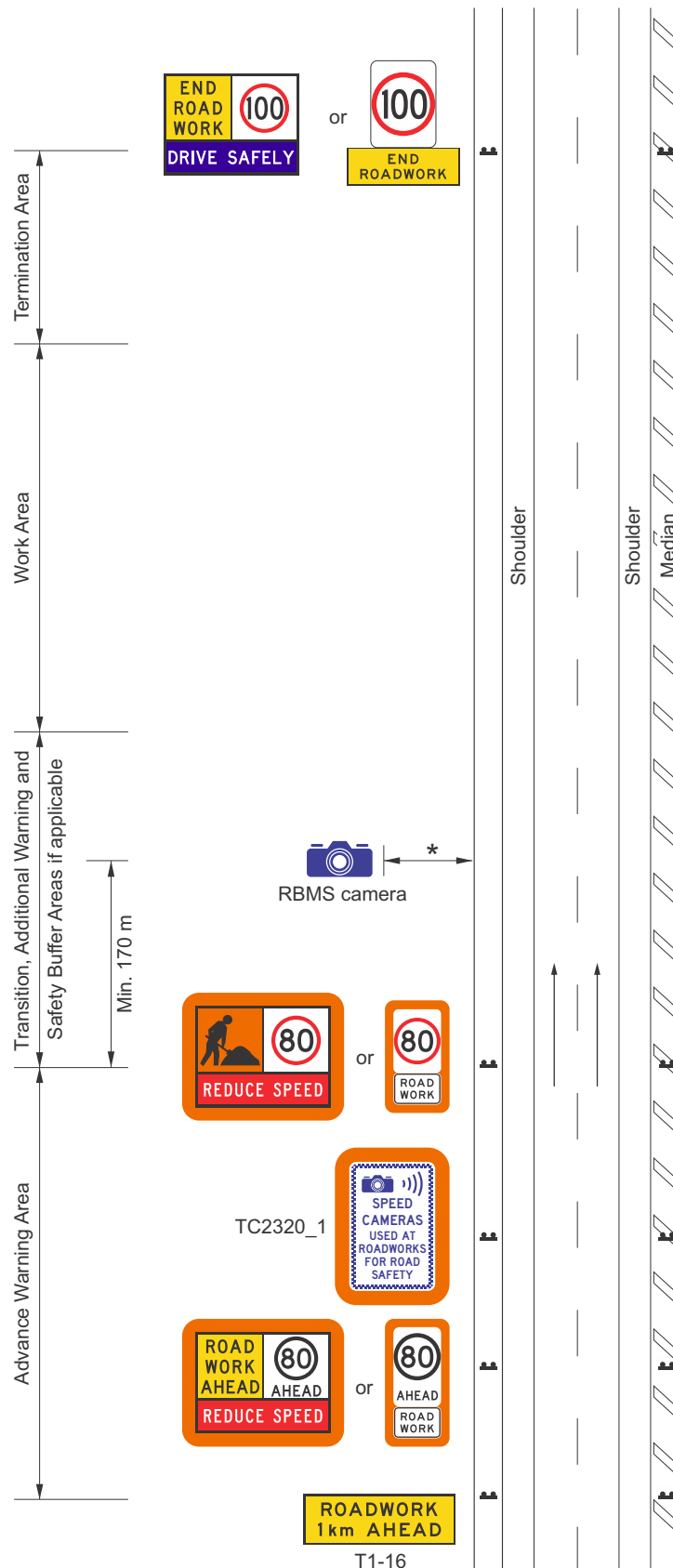
Page 2 of 3

Designed
RH 02/07

Checked
DJ 01/20

Scale
Not to Scale

A B



NOT TO SCALE

* Refer to Item 3 of Section B2.4 of Appendix B, MRTS02.



**Queensland
Government**

RBMS CAMERA INSTALLATION LOCATION

Department of Transport and Main Roads
Infrastructure Management & Delivery Division

APPROVED AS OFFICIAL TRAFFIC SIGN

22/07/22
Date

R. King
PRINCIPAL ENGINEER
(Traffic Engineering)

TC2320_3

Page 3 of 3

Designed
RH 07/22

Checked
AJ 07/22

Scale
Not to Scale

A	B			
---	---	--	--	--