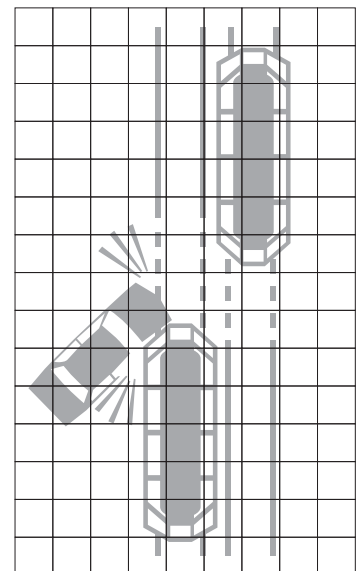
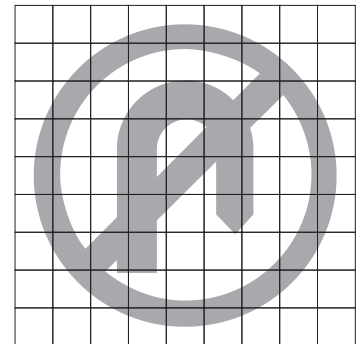


	a	b	c	d	e	f	g	h	r
SIZE A	450	950	10	30	45	525	35	300	50
SIZE B	600	1250	10	30	60	700	30	400	50



### Colour Legend



Black



Retroreflective yellow

**Note:** This sign may be used to warn of the hazard of trams approaching from both directions for intersections where U-turns are not permitted across tram tracks.



**Queensland  
Government**

Department of Transport and Main Roads  
Infrastructure Management & Delivery Division

Designed  
RH 08/18

Checked  
DJ 08/18

Scale  
Not to Scale

## WARNING SIGN NO U-TURN ACROSS TRAM TRACKS

APPROVED AS OFFICIAL TRAFFIC SIGN

*R. King*  
PRINCIPAL ENGINEER  
(Traffic Engineering)

03/08/18  
Date

**TC2017**

A	B			
---	---	--	--	--